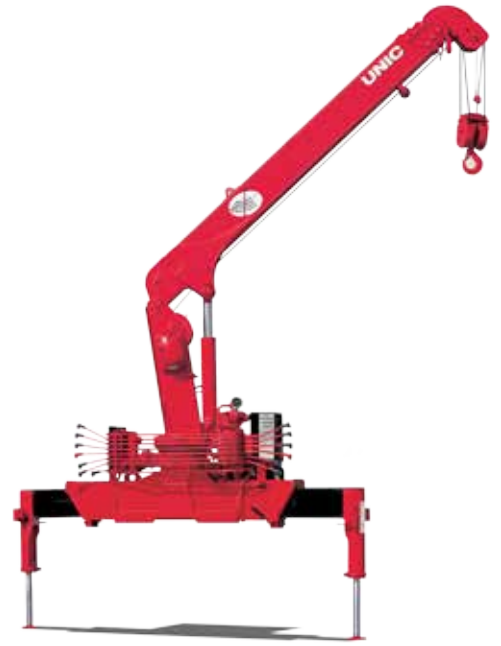


UNIC
UR-V376
TRUCK-MOUNTED CRANE



8,000 lbs
MAXIMUM LIFT CAPACITY



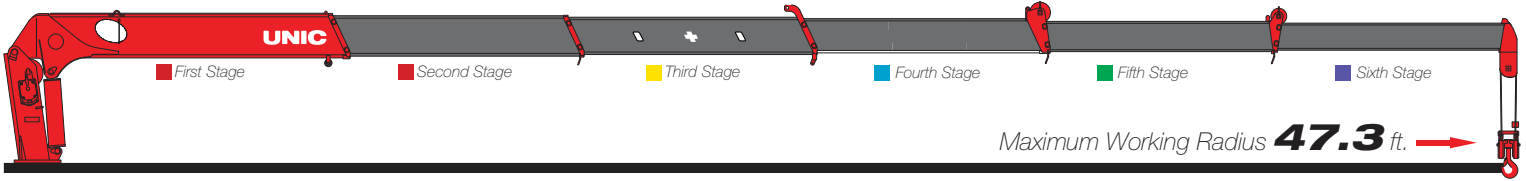
47.3ft | **56ft**
BOOM LENGTH | TIP HEIGHT

**BEHIND
THE CAB
OR REAR**
MOUNTING OPTIONS

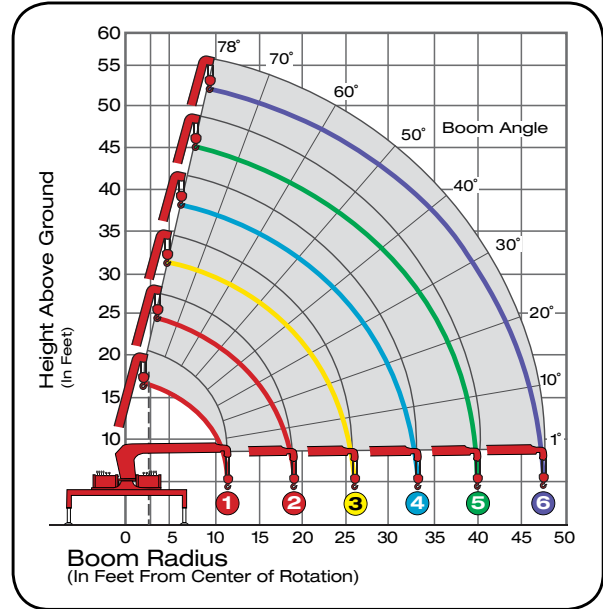


**REMOTE CONTROL
OPTION AVAILABLE**

6-Section Boom



Model UR-V376 Telescopic Boom Design	
Maximum Lift Capacity	8,000lbs @ 7.9ft
Lift Capacity - 10ft	4,900 lbs
Lift Capacity - 18.5ft	2,400lbs
Lift Capacity - 47.3ft	300lbs
Tip Height	56 ft
Working Radius	2.4ft to 47.3ft
Boom Length	11.9ft to 47.3ft
Boom Sections	Six (6)
Swing Rotation	360° Continuous
Out & Down Outriggers	Two (2)
Operating Weight	3,200 lbs
Minimum Chassis	23,000 GVWR



Boom Radius	6.8ft	8ft	8.9ft	10ft	11ft	13ft	16ft	18.5ft	22ft	25.7ft	29ft	32.9ft	36ft	40ft	44ft	47.3ft
1st Stage	8000	6300	5500	4900	4400											
2nd Stage	8000	6300	5500	4900	4400	3600	2900	2400								
3rd Stage		4900	4900	4400	3900	3100	2400	2000	1600	1400						
4th Stage				2300	2300	2300	1900	1700	1400	1200	1000	900				
5th Stage						1400	1400	1100	900	800	700	600	550	500		
6th Stage							700	600	550	500	450	400	350	350	300	300



800.452.5011
smileyliftingsolutions.com

NATIONWIDE RENTALS | SALES | SERVICE
FINANCING AVAILABLE